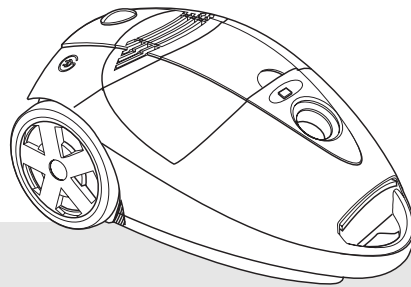


morphyrichards®

Allergy cylinder vacuum cleaner



Please read and keep these instructions



getting the best from
your new cleaner...

If your cleaner isn't picking up as well as it should, please check

- **Dustbags**

It is important to replace them, otherwise the performance of the cleaner will be impaired

- **Filters**

It is important that the filters are cleaned regularly or replaced to allow air through the appliance

- **Blockages**

Check the nozzle, tubes and hose for blockages



www.morphyrichards.com

Important safety instructions

The use of any electrical appliance requires the following common sense safety rules.

Primarily there is danger of injury or death and secondly the danger of damage to the appliance. These are indicated in the text by the following two conventions:

WARNING: Danger to the person!

IMPORTANT: Damage to the appliance!

In addition we offer the following safety advice.

Location

- Do not use or keep this product outside when it is raining.
- Do not store the appliance near hot ovens or heating appliances.

Mains lead

- Do not allow the mains lead to become strained or run this appliance over it.
- If the electrical cable becomes damaged the complete cable assembly must be replaced. Do not attempt this task yourself, contact Morphy Richards using the replacement parts number on the front of this leaflet.

Children

- Children do not understand the dangers associated with operating electrical appliances. Never allow children to use this appliance.

Personal safety

- **WARNING: To protect against fire, electric shock and personal injury do not immerse cord, plug or cleaner in water or other liquid.**
- The plug must be removed from the wall socket before cleaning or maintaining the appliance.
- Never modify the cleaner in any way.

- Never use in the presence of explosive liquids or vapours.
- Never pick up inflammable or poisonous liquids such as petrol, copier toner or other volatile substances. Never pick up acids, asbestos or asbestos dust.
- Repairs to electrical appliances are only to be undertaken by trained personnel. Unprofessional repairs can be dangerous for users.
- Use only genuine Morphy Richards spare parts and accessories.
- The appliance must never be left running when unsupervised.
- This vacuum cleaner is intended for domestic use only. Misuse or use for commercial or any other purpose will render the guarantee invalid.

Product safety

- Never use the appliance without the filters being installed.
- Never use the appliance to vacuum hot ashes, broken glass, sharp objects or liquids.

Electrical requirements

Check that the voltage on the rating plate corresponds with your house electricity supply which must be A.C. (alternating current).

If the socket outlets in your home are not suitable for the plug supplied with this appliance the plug should be removed and the appropriate one fitted.

If you cut off the plug and let go of the cable it will rewind into the machine. Therefore you must pull out a length of cable and secure it before cutting off the plug and refitting a new one.

WARNING: The plug removed from the mains lead, if severed, must be destroyed as a plug with a bared flexible cord is hazardous if engaged into a live socket outlet.

Should the fuse in the 13 amp plug require changing a 13 amp BS1362 fuse must be fitted.

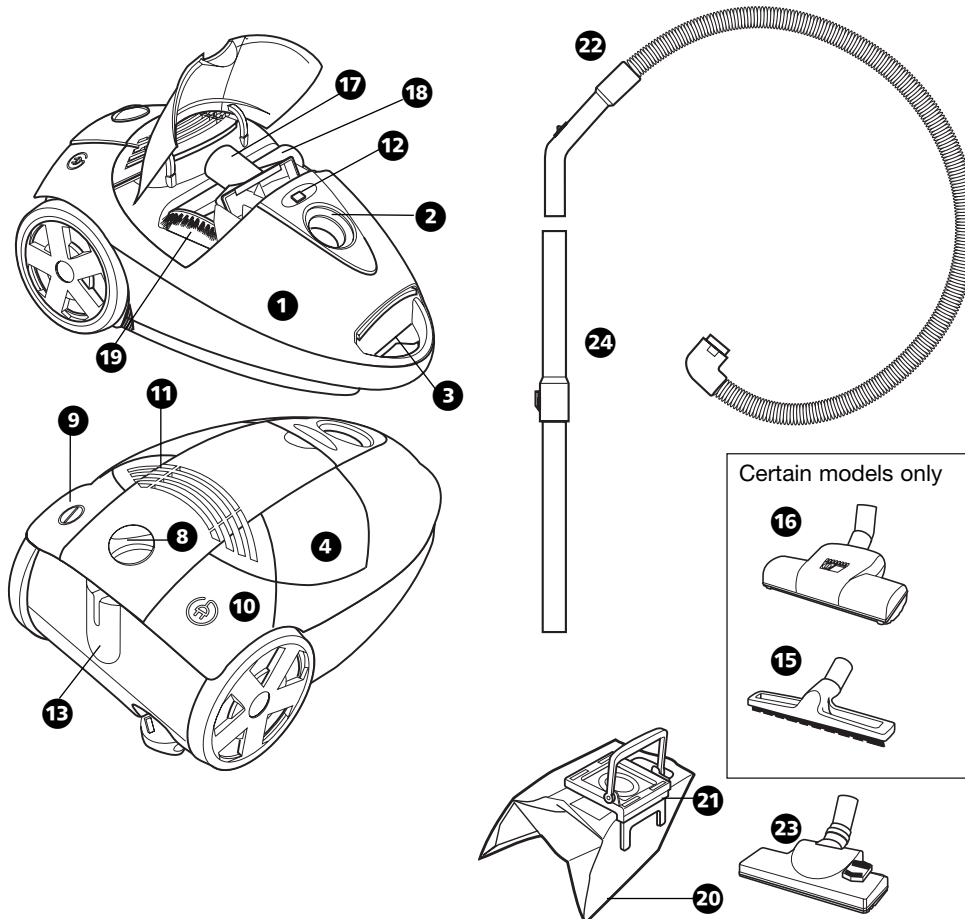
Features

- ❶ Dust compartment cover
- ❷ Opening for suction hose
- ❸ Dust compartment lock button
- ❹ Tool storage compartment cover
- ❺ Motor protection filter (not shown)
- ❻ Dustbag safety lock (not shown)
- ❼ Slot for attaching dustbag holder (not shown)
- ❽ Variable power control
- ❾ On/off foot switch
- ❿ Cable rewind foot switch
- ⓫ Exhaust filter
- ⓬ 'Bag full' indicator
- ⓭ Tube standby slot
- ⓮ Tube park (not shown)

Accessories you should have

- ⓯ Hard floor brush*
- ⓰ Turbo brush*
- ⓱ Upholstery nozzle
- ⓲ Crevice tool
- ⓳ Dusting brush
- ⓴ Paper dustbag
- ⓵ Dustbag holder
- ⓶ Suction hose with air flow control
- ⓷ Floor nozzle
- ⓸ Telescopic metal tubes

* optional extra



Tools and accessories

Standard floor nozzle

This nozzle is suitable for general purpose cleaning on a wide variety of floor coverings.

Turbo brush (optional extra)






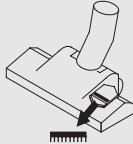

This nozzle is suitable for cleaning and rejuvenating cut pile carpets and is ideal for picking up stubborn dirt and pet hairs.

Hard floor brush (optional extra)

Designed specifically for use on wood, tiles and all other hard floor types.

Tool storage

The upholstery nozzle and the crevice tool are stored in the internal storage compartment.

Standard accessories	Application
	 Curtains and delicate fabrics
	 Textiles and upholstery
	Shelves and hard surfaces
	 Carpets and other textile floor coverings (brushes up)
	 Settings for heavy dirt and smooth floors (brushes down)

Operation

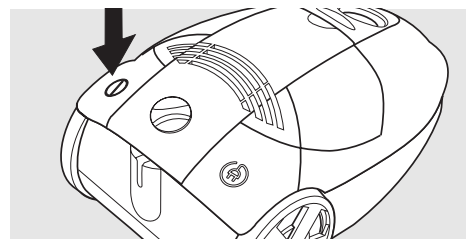
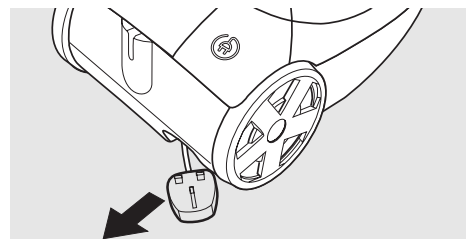
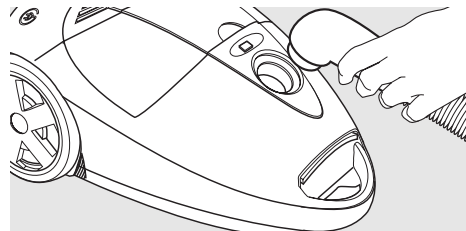
Suction hose

Snap the 360° rotating head on the suction hose into the suction hose opening on the vacuum cleaner.

The appropriate cleaning tool can be attached directly to the other end of the suction hose or the connecting tube can be used between the suction hose and the tool.

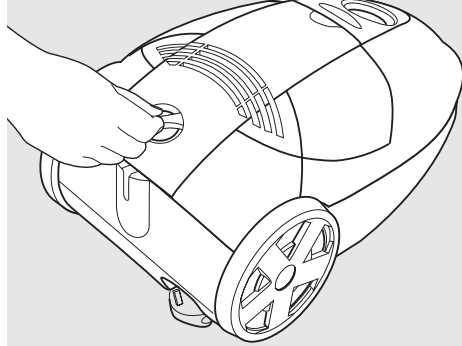
Switching on

Always pull out the supply cable to its maximum length. Plug the appliance into the mains supply. Ensure that the electronic suction power control is set to minimum by turning the dial anti-clockwise as far as it will go. Push the on/off foot switch to start the motor.



Controlling suction power

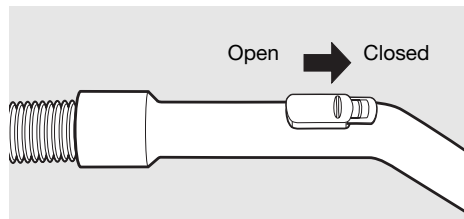
The suction power can be varied to suit the surface being cleaned, by using the variable power control. See table for guideline settings.



Certain models only

The suction power can also be adjusted using the fingertip control on the handle.

Closed: full suction
Open: low suction



Overheating protection

In the event of a motor overload, your vacuum cleaner will switch off automatically. If this occurs, press the on/off switch, disconnect from the mains supply and leave for 15 minutes to allow the motor cool down.

The vacuum cleaner cuts out automatically when:

- The floor nozzle or tubes become blocked
- Using the vacuum cleaner with a full dustbag
- The motor protection filter is very dirty
- The exhaust filter is very dirty.

Check and rectify before attempting to reuse your vacuum cleaner.

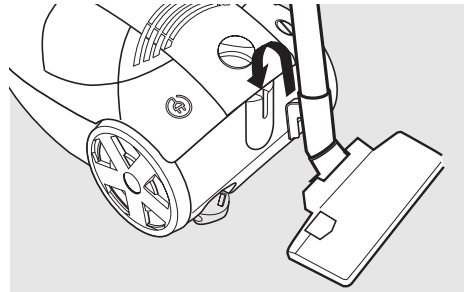
IMPORTANT: Do not use your vacuum cleaner without the filters fitted.

Power setting	Application
	Curtains and delicate fabrics
	Textiles and upholstery
	Floor coverings such as rugs or economy setting for carpets
	Carpets or hard floor coverings

Tube standby

During short breaks in cleaning the tubes can be held in an upright, 'standby' position, whilst you move furniture for instance.

IMPORTANT: Ensure that the appliance is never left unattended whilst it is switched on.



Switching off

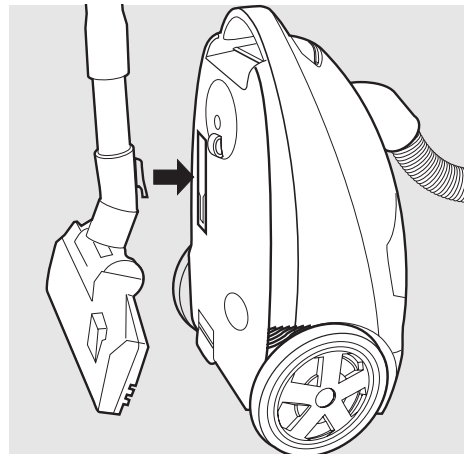
Switch off the appliance. Remove the plug from the mains supply and rewind the power cable using the cable rewind foot switch.

WARNING: When using the cable rewind, always hold the plug as the cable will rewind quickly.

Storage

Tube park

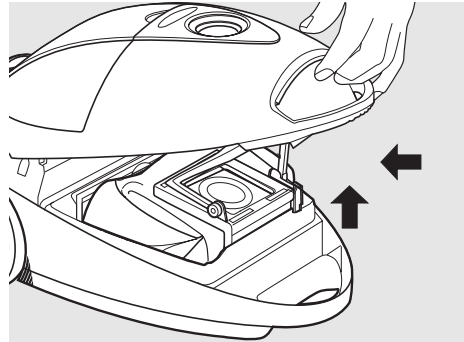
The vacuum cleaner can be stored in an upright position. Rotate the floor nozzle until the lug on the back of it can be fitted into the tube park slot on the base of the appliance.



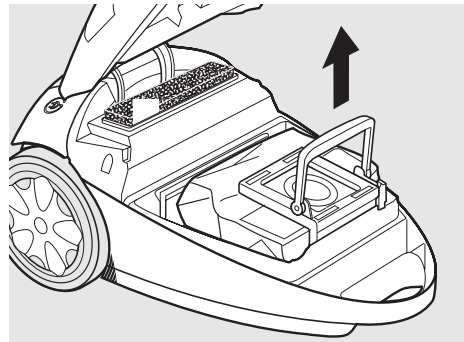
Changing the dustbag

If suction power is reduced or if the 'dust bag full' indicator is permanently on, the dust bag needs changing. Also check whether the suction hose, tube or nozzle are blocked.

To access the dust bag, press the dust compartment release button to open the cover.

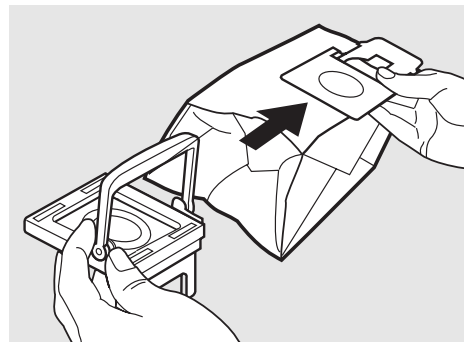


- 1 Pull the tab on the dust bag to one side so that the opening is hygienically sealed.
- 2 Pull out the dust bag holder and dust bag in an upward direction.



- 3 Pull the bag sideways out of the holder.
- 4 Dispose of the bag with your household waste.
- 5 Insert a new dust bag in the holder.
- 6 Replace the dust bag holder and close the cover.

IMPORTANT: The dust bag compartment cover can only be closed once a dust bag has been correctly inserted.



Changing the motor protection filter

IMPORTANT: Never use the appliance without the motor protection filter installed, otherwise damage to the motor may occur which would not be covered by the guarantee.

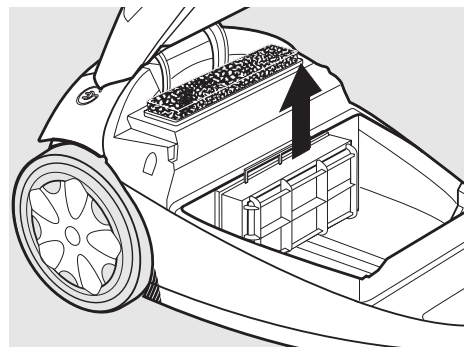
Allergy models with 3-layer hygiene filter cassette

- 1** Pull out the filter cassette in an upward direction and clean by tapping gently or dispose of it with your household waste.
- 2** Put in a new filter cassette.

It is recommended that this filter should be cleaned everytime the dustbag is changed and replaced every 6 months, or sooner if it starts to give an unpleasant odour or if the dust bag has been damaged.

IMPORTANT: The filter material is sensitive. Do not press the surface or you may damage the filter material.

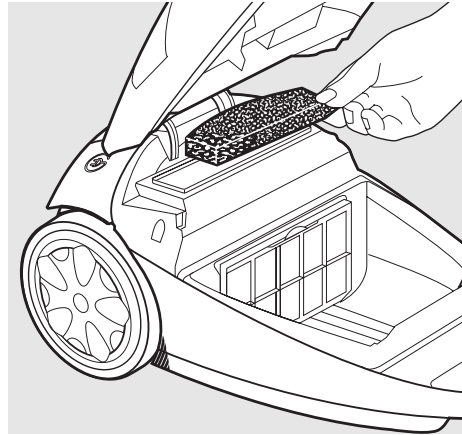
Insert the dust bag and close the dust bag compartment cover.



Changing the exhaust air filter

The exhaust air filter should be cleaned by shaking every time the dustbag is changed. This filter can also be washed in warm water (no detergents added) and allowed to dry naturally.

IMPORTANT: The filter must be totally dry before putting it back into the cleaner.



Cleaning and maintenance

Unplug from the mains before cleaning. The vacuum cleaner, especially the dust compartment and all accessories can be cleaned using a damp cloth or a non-abrasive domestic cleaner and wiped dry.

To keep the underside of the floor nozzle clean, vacuum it at regular intervals using the crevice tool.

Purchasing replacement filters

Use only Morphy Richards replacement filters which can be purchased from specialist retailers or by calling the number on the front page of this leaflet.

Helpline

If you have any difficulty with your appliance, do not hesitate to call us. We're more likely able to help than the store from where you bought it.

Please have the following information ready to enable our staff to deal with your query quickly:

- Name of the product
- Model number as shown on the underside of the appliance
- Serial number

genuine
replacements



PremAir Allergy cylinder vacuum cleaners



The British Allergy Foundation considers that these products may, in proper use, reduce exposure to both House Dust Mite (Der p 1) and Cat Allergen (Fel d 1).

Assessment carried out by BAF indicate that an individuals exposure can be reduced but this does not mean that an individuals allergic symptoms will necessarily diminish. BAF's opinion applies only to the products and allergen stated. The product should be used only for its intended purpose and strictly in accordance with the manufacturers instructions at all times.

Exposure to allergen can be dangerous. If you believe that you may suffer from an allergy you should seek medical advice.

The British Allergy Foundation is a national charity (Charity reg. no. 1003726) founded in 1991 with the aim of improving awareness, prevention and treatment of allergy. The Foundation encompasses all types of allergy and is managed by medical specialists from a variety of disciplines including dermatology, ENT surgery, respiratory medicine, paediatrics, ophthalmology, immunology and gastroenterology.

The Foundation is continuously striving to help sufferers to help themselves, often seeking ways to avoid, or reduce exposure to, relevant allergens. The Seal of Approval Scheme forms a part of this initiative.

THE BRITISH
Allergy
FOUNDATION

Your three-year guarantee

- **It is important to retain the retailers receipt as proof of purchase.** Staple your receipt to this back cover for future reference.

Please quote the following information if the product develops a fault. These numbers can be found on the base of the product.

Model no. Serial no.

All Morphy Richards products are individually tested before leaving the factory. In the unlikely event of any appliance proving to be faulty within 28 days of purchase it should be returned to the place of purchase for it to be replaced.

If the fault develops after 28 days and within 36 months of original purchase, you should take the appliance to your nearest service agent. A list containing details of your nearest service agent is included with your appliance but please contact the helpline quoting model number and serial number should you require further assistance. Repair or replacement of the product is subject to the exclusions set out below (1-6).

If you suspect a fault, follow the simple checks detailed below before returning the appliance or calling the helpline.

- Check the dust bag and filters for blockages.
- Check the hose and tubes for blockages.
- Check the plug is firmly in the socket and the supply is switched on.
- Make sure the socket is working by trying another appliance.

If for any reason this item is replaced during the three-year guarantee period, the guarantee on the new item will be calculated from original purchase date. Therefore it is vital to retain your original receipt or invoice to indicate the date of initial purchase.

To qualify for the three-year guarantee the appliance must have been used according to the manufacturers instructions.

Morphy Richards shall not be liable to replace or repair the goods under the terms of the Guarantee where:

- 1 The fault has been caused or is attributable to accidental use, mis-use, negligent use or used contrary to the manufacturers recommendations or where the fault has been caused by power surges or damage caused in transit.
- 2 The appliance has been used on a voltage supply other than that stamped on the products.
- 3 Repairs have been attempted by persons other than our service staff (or authorised dealer).
- 4 Where the appliance has been used for hire purposes or non-domestic use.
- 5 The guarantee excludes consumables such as bags and filters.
- 6 Morphy Richards are not liable to carry out any type of servicing work, under the guarantee.

This guarantee does not confer any rights other than those expressly set out above and does not cover any claims for consequential loss or damage. This guarantee is offered as an additional benefit and does not affect your statutory rights as a consumer.

- This guarantee is valid in the UK and Ireland only.



Morphy Richards products are intended for household use only

Morphy Richards has a policy of continuous improvement in product quality and design. The Company, therefore, reserves the right to change the specification of its models at any time.

morphy richards[®]

The After Sales Division,
Morphy Richards Ltd, Mexborough,
South Yorkshire, England, S64 8AJ

Helpline (office hours)
UK 0870 0602604
Republic of Ireland 1800 409119

VC70047M UK Rev 1 02/05